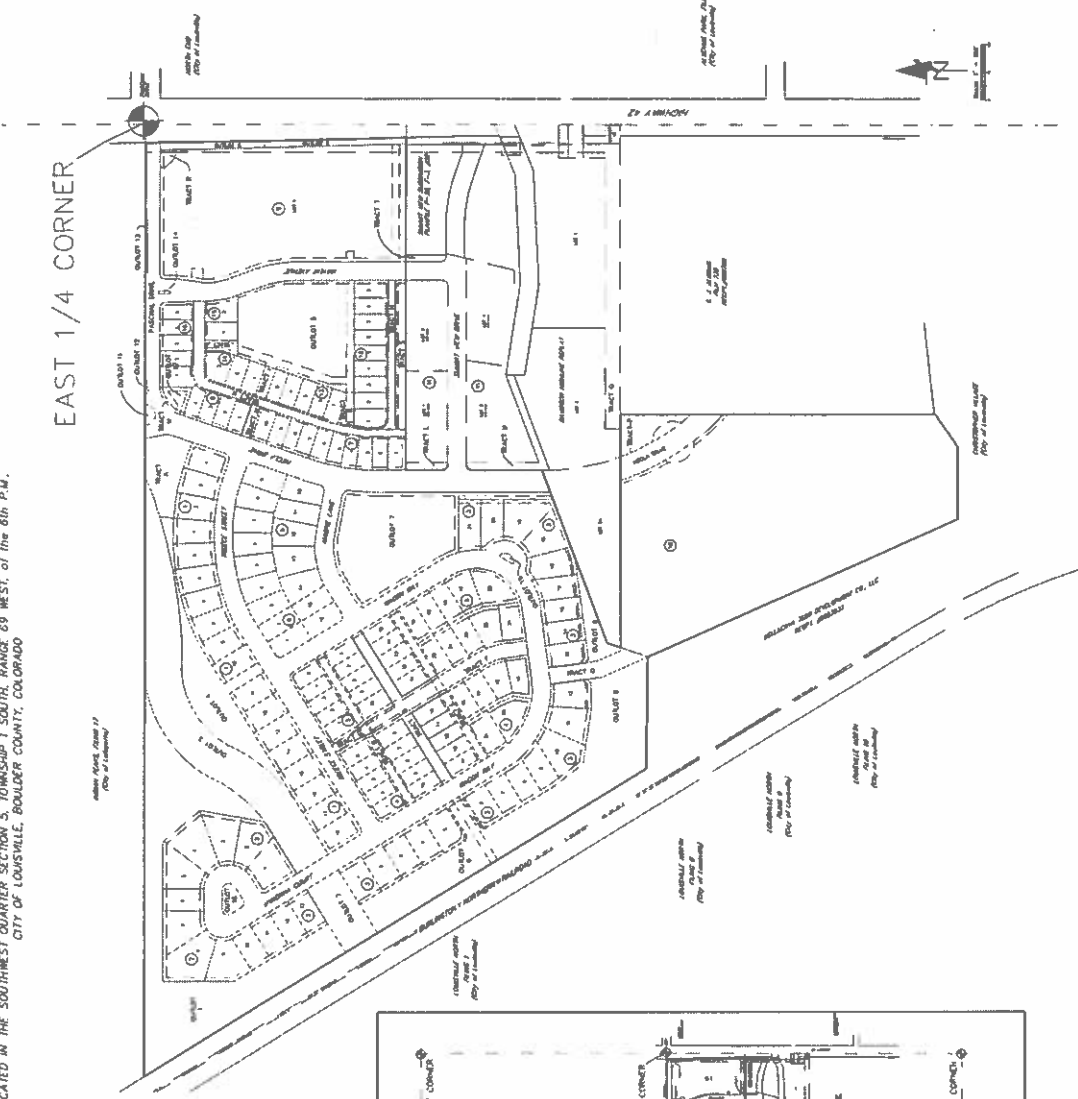


TAKODA METROPOLITAN DISTRICT NO. 4137

LOCATED IN THE SOUTHWEST QUARTER SECTION 5, TOWNSHIP 1 SOUTH, RANGE 69 WEST, of the 6th P.M., CITY OF LOUISVILLE, BOULDER COUNTY, COLORADO

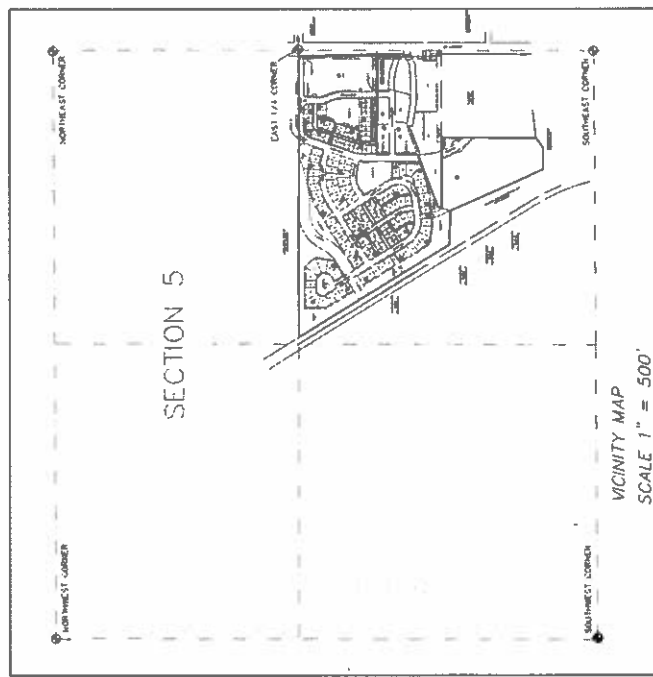
EAST 1/4 CORNER



- LEGAL DESCRIPTION:
- LOTS 1-16, BLOCK 1
 - LOTS 1-16, BLOCK 2
 - LOTS 1-16, BLOCK 3
 - LOTS 1-16, BLOCK 4
 - LOTS 1-16, BLOCK 5
 - LOTS 1-16, BLOCK 6
 - LOTS 1-16, BLOCK 7
 - LOTS 1-16, BLOCK 8
 - LOTS 1-16, BLOCK 9
 - LOTS 1-16, BLOCK 10
 - LOTS 1-16, BLOCK 11
 - LOTS 1-16, BLOCK 12

DAVID WALKER, P.L.S. 20047, A DULY REGISTERED LAND SURVEYOR IN THE STATE OF COLORADO, ON BEHALF OF THE CITY OF LOUISVILLE, BOULDER COUNTY, COLORADO, HAS PREPARED THIS PLAN IN ACCORDANCE WITH THE BEST OF HIS KNOWLEDGE AND BELIEF, AND HAS PREPARED UNDER MY DIRECT SUPERVISION.

DAVID WALKER
COLORADO P.L.S. 20047



RMCS SURVEYING, LLC
650 SPRUCE STREET, SUITE 2A
LOUISVILLE, COLORADO 80027
781-581-1111
781-581-1488 FAX